

## Touch Screen Constant-Temperature Incubator



Double-layer Door (D type)



Glass Viewing Window Door (G type)

### Standard Accessories:



Test port

### Optional Accessories:



Base stand



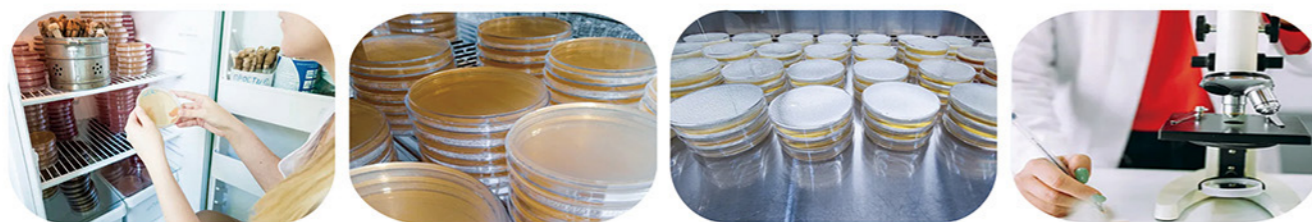
Footmaster Caster



UV lamp

### Applications:

This product is used for storing bacteria, biological culture and other scientific research. Widely used in scientific research, colleges and universities, biology, agriculture and various laboratories, etc.



### Features:

- \* Large LCD touch screen.
- \* D type: with inner glass door.  
G type: with viewing window.
- \* Microprocessor controller.
- \* Stainless steel chamber.

### Safety Functions:

- \* Over temperature alarm.
- \* Independent limit temperature alarm system.
- \* Leakage current and over-voltage protector.

### Technical Parameters:

Model	BJPX-H54BK(D/G)	BJPX-H88BK(D/G)	BJPX-H160BK(D/G)	BJPX-H200BK(G)	BJPX-H270BK(G)
Capacity	54L	88L	160L	200L	270L
Temperature Control Method	PT100				
Temperature Range	RT+5~85°C				
Temperature Stability	±0.5°C (at 37°C)				
Temperature Uniformity	±1°C (at 37°C)				
Ambient Temperature	5~30°C, recommend 25°C±2°C				
Timing Range	0~99.9h				
Shelves	2pcs/adjustable				
Power Consumption	345W		495W	645W	
Power Supply	AC220V±10%, 50/60Hz(Standard); AC110±10%, 60Hz(Optional)				
Internal Size(W*D*H)mm	395*346*395	500*364*500	558*518*600	598*638*548	665*720*600
External Size(W*D*H)mm	D type: 536*588*681 G type: 522*626*587	D type: 650*573*793 G type: 627*621*692	D type: 718*732*890 G type: 685*779*790	725*809*830	791*859*912
Package Size(W*D*H)mm	D type: 670*690*850 G type: 630*715*750	D type: 755*660*955 G type: 835*710*850	D type: 825*830*1060 G type: 790*865*960	830*895*990	D type: 920*900*1200 G type: 900*945*1075
Gross Weight(kg)	D type: 51 G type: 44	D type: 72 G type: 58.5	D type: 100 G type: 82	89	D type: 102 G type: 115